

Exercice 1

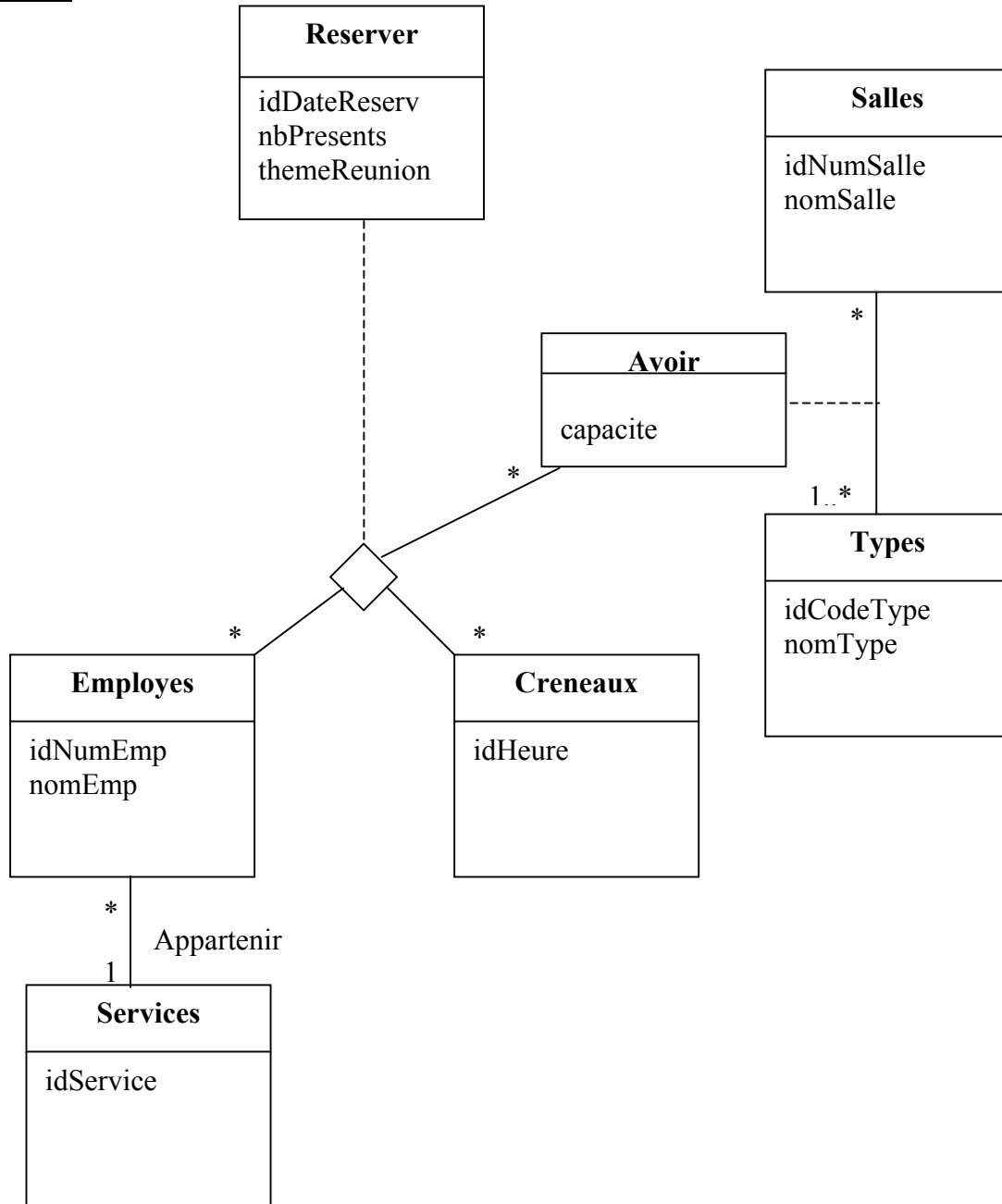


Schéma relationnel :

Salles (idNumSalle, nomSalle)

Services (idService)

Employees (idNumEmp, nomEmp, idService#)

Creneaux (idHeure)

Types (idCodeType, nomType)

Avoir (idCodeType#, idNumSalle#, capacite)

Reserver (idNumEmp#, idHeure#, (idCodeType#, idNumSalle#)#, idDateReserv, nbPresents, themeReunion)

Exercice 2 :

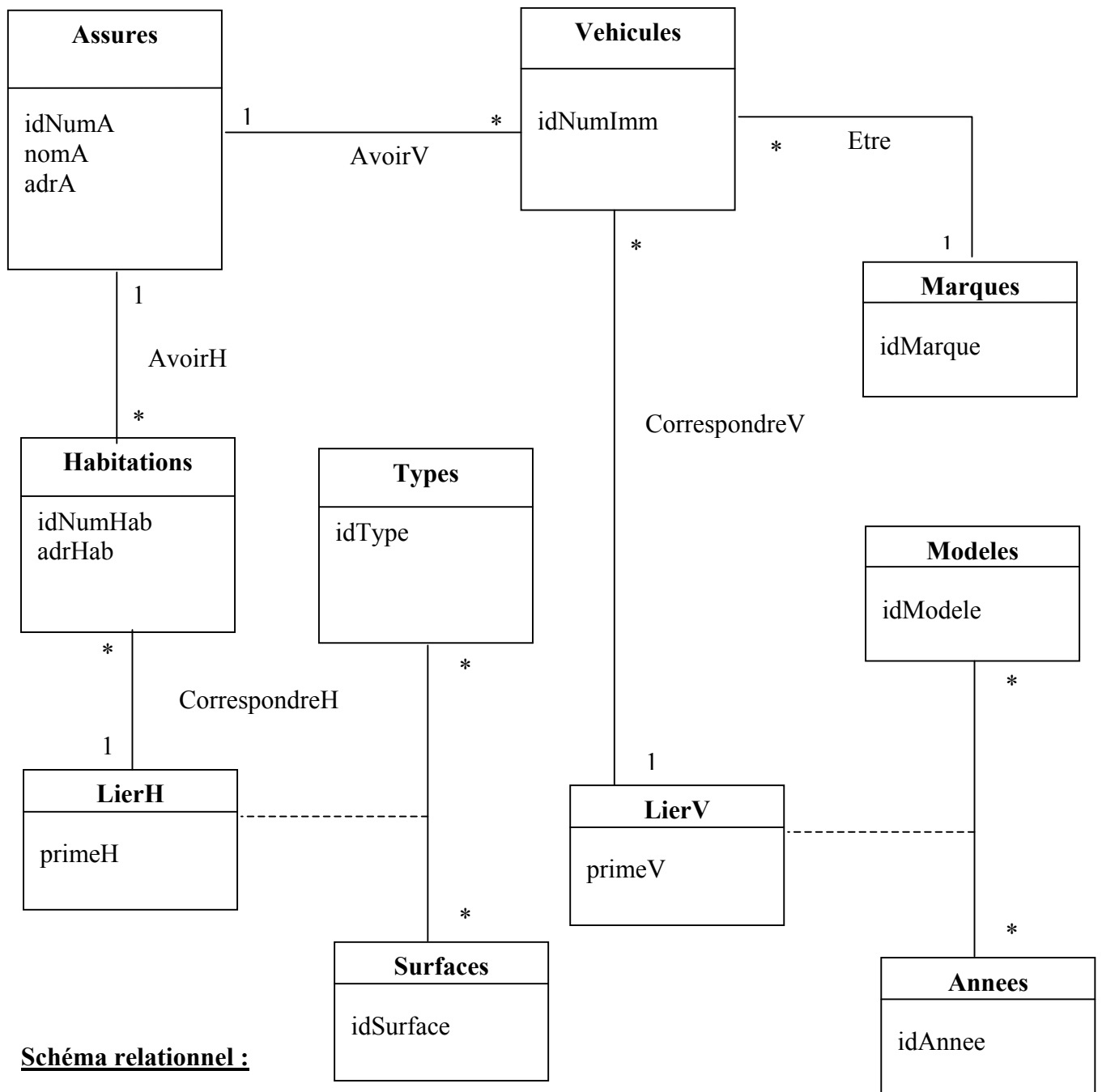


Schéma relationnel :

Surfaces (idSurface)

Types (idType)

Assures (idNumA, nomA, adrA)

Annees (idAnnee)

Modeles (idModele)

Marque (idMarque)

LierH (idType#, idSurface#, primeH)

LierV (idAnnee#, idModele#, primeV)

Vehicules (idNumImm, idMarque#, idNumA#, (idModele#, idAnnee#)#)

Habitations (idNumHab, adrHab, (idType#, idSurface#)#, idNumA#)

Exercice 3 :

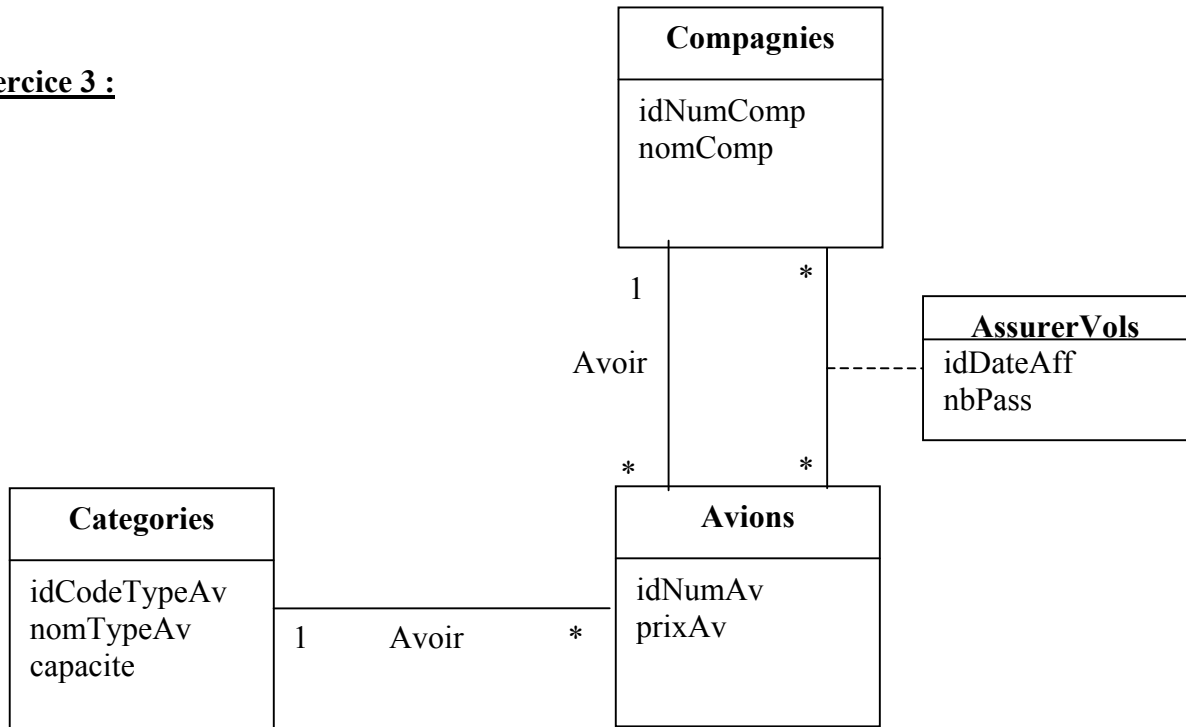


Schéma relationnel :

Categories (idCodeTypeAv, nomTypeAv, capacite)

Compagnies (idNumComp, nomComp)

Avions (idNumAv, prixAv, idNumComp#, idCodeTypeAv#)

AssurerVols (idNumAv#, idNumComp#, idDateAff, nbPass)

Exercice 4

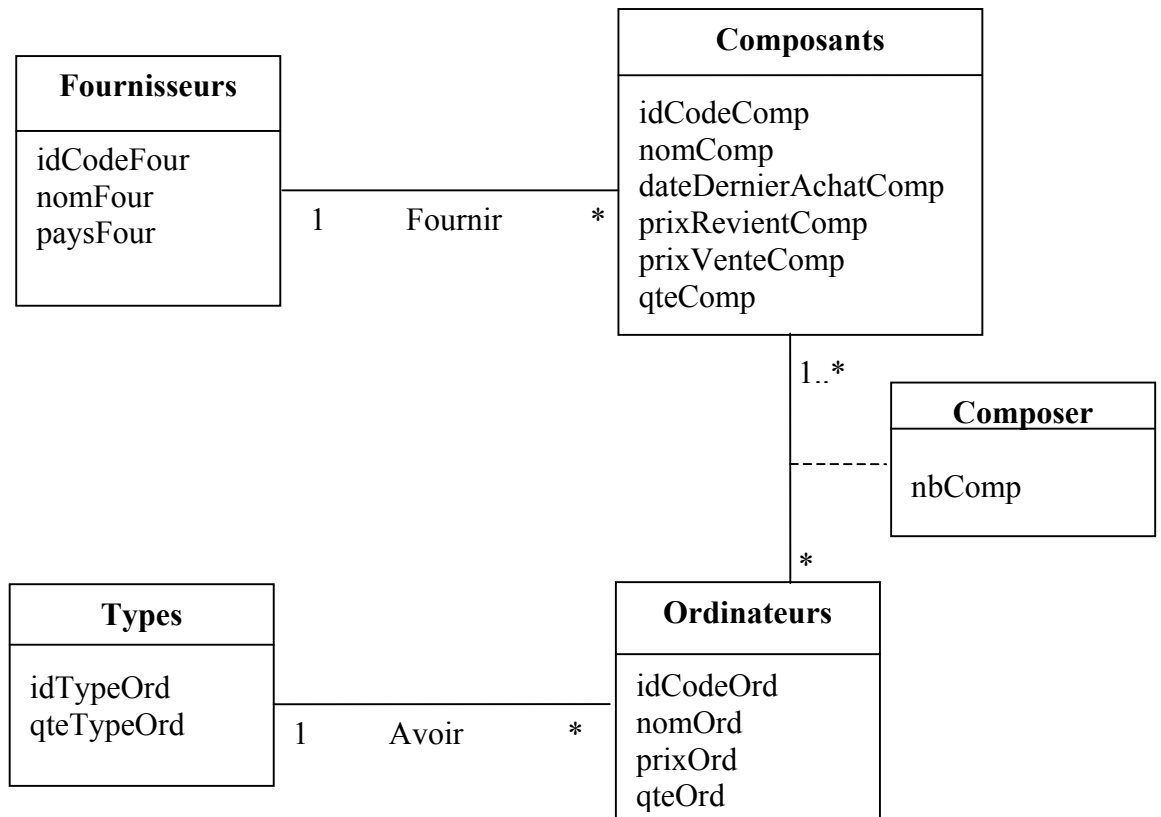


Schéma relationnel :

Fournisseurs (idCodeFour, nomFour, paysFour)

Composants (idCodeComp, nomComp, dateDernierAchatComp, prixRevientComp, prixVenteComp, qteComp, idCodeFour#)

Types (idTypeOrd, qteTypeOrd)

Ordinateurs (idCodeOrd, nomOrd, prixOrd, qteOrd, idTypeOrd#)

Composer (idCodeComp#, idCodeOrd#, nbComp)

Exercice 5

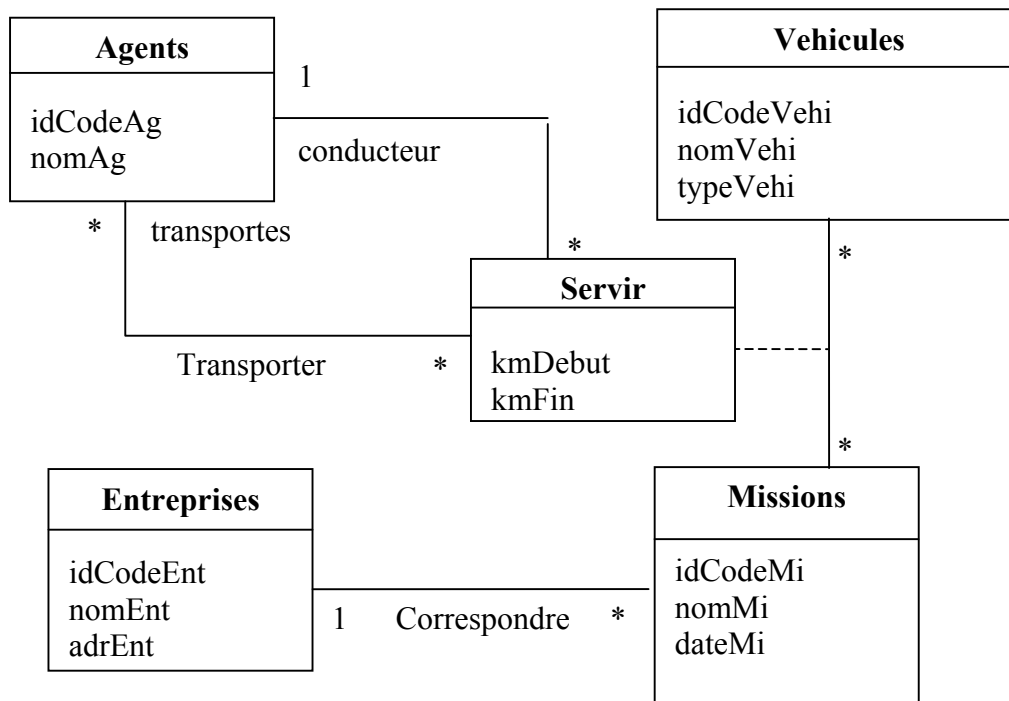


Schéma relationnel :

Vehicules (idCodeVehi, nomVehi, typeVehi)

Agents (idCodeAg, nomAg)

Entreprises (idCodeEnt, nomEnt, adrEnt)

Missions (idCodeMi, nomMi, dateMi, idCodeEnt#)

Servir (idCodeVehi#, idCodeMi#, kmDebut, kmFin, idCodeAg#)

Transporter (idCodeVehi#, idCodeMi#)#, idCodeAg#)